



Succulent Scoop

Conejo Cactus & Succulent Society

May 2022

Volume 7 Number 5

Mission Statement:

The Conejo Cactus And Succulent Society encourages the study, cultivation, conservation, and appreciation of cacti and other succulent plants.

Email: ConejoCSS@hotmail.com

Facebook: Conejo Cactus & Succulent Society

Web: ConejoCSS.com

Next Meeting
Monday, May 2nd
7:00 pm

California Lutheran University
Lundring Events Center
130 Overton Court
Thousand Oaks, CA 91360
Doors Open at 6:30

Program

Baja Expedition 2018

By Dean Karras

Dean will present a botanical travelogue of his first expedition to Baja, Mexico in February of 2018. The presentation will be on his 1,000-mile trip and his field observations of the plants we know and love: cacti, agaves, euphorbias, pachycauls, and dudleyas. He will also discuss how the greater climate, geology, and ecology of the Baja region shapes the unique landscape and the plants that inhabit it.

Dean is the founder and owner of Gnosis Nursery in Ramona, CA. Palomar Club member since 2017, member of SDCSS since 2019. Some of his favorite succulent genera are: Aloe, Agave, Dudleya, Trichocereus, Echinocereus, Astrophytum, and Ferocactus.



Refreshments - Back To Pot Luck

I think we're all glad to get back to some kind of normalcy with our pot luck table at the meetings. We are going back to our alphabet system of bringing goodies, but don't let that stop you from bringing something even if it isn't your turn. People whose last name begins with **D-F**, please bring something in May!

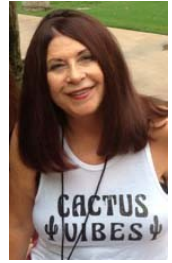
A big thank you to Pam Smith for her previous handling of refreshments! She has a history with food service and I learned a lot from her. Now she's managing membership, so Gerry Caruso stepped up when we returned to live meetings, and now Julie Fox will be helping out. At the last meeting, Julie suggested we use a Keurig for our coffee. I thought that was a great idea and in fact have a Keurig of my own that I will be bringing to the meetings. I've purchased a variety box each of good quality regular and decaf K-cups. If you have K-cups you won't be using for whatever reason, feel free to bring them and add to the club's stash. We're a great club and we deserve great coffee for our breaks!

—Terry Wilson



President's Message

Our club is bouncing back nicely after Covid. The roster is up to 86 members and grows with every meeting. I'm also glad to announce that all our volunteer positions are filled, making everyone's job much easier by not having to do double-tasking.



Our three newest volunteers are:

Ryan Ripley who has taken over our social media and offered to handle our emails.

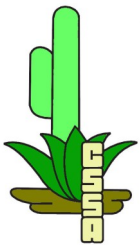
Liz Gollner and **Julie Cox** will oversee setting up and breaking down our refreshment table. It may not sound like much, but it eliminates the need for others to be away from their jobs, and it's important for our meetings.

Thank you, Ryan, Liz, and Julie. We appreciate you, and I also want to thank everyone who volunteered to help with our April sale. Without you, our sales would not go as smoothly as they do.

I'm sure most of our long-term members remember Audrey Bohn. She had been a loyal and valued member of the CCSS since its inception in 2016. Unfortunately, Audrey passed away in March of 2021. Her husband Mitch called me at the end of March to tell me he was ready to donate Audrey's plants and pots to our club. Two weeks ago, I went to Mitch's house to collect his donations. I have repotted and added top dressing to some that we will sell at our April sale. Others will be sold or used as drawing plants at our meetings.

I feel Audrey is still with us in her desire to help the club through her plants. Thank you, Audrey, and thank you, Mitch.

Linda Holub
President, CCSS



Heads Up for the CSSA Show and Sale will be held on July 1 thru July 3.

All club members are invited to submit entries for the show competition. See Barbara Hall's information on Page 7. John Matthews or Melinda Hines can email you a copy of the Show Schedules & Indexes. You are encouraged to enter. It is a great event with the opportunity to see beautiful cacti and succulents, meet folk from other clubs and maybe to purchase that plant on your list that you've been looking for.

CCSS 2022 Officers

President

Linda Holub

1st VP, Programs

Ann Hopkinson

2nd VP, POM & Education

Kyle Williams

3rd VP, Special Events

Donna Pachorek

Treasurer

Julie Myers

Secretary

Valerie Fox

Director I, Membership

Glen Smith

Assistant to Director I

Pam Smith, Membership

Director II, Education

Terry Wilson

Scoop Editor

Melinda Hines

Hospitality

Lisa Gailey and

Pam Smith

Drawing Coordinator

Gerry Caruso

Website

Tim Alvord

Librarian

Glen Smith

Plant Propagation

Terry Wilson

Event Publicity

Donna Pachorek

CCSS Mailing Address: 530 Los Angeles Ave. Ste #115-183, Moorpark, CA 93021



Something from Nothing Pollinate your Epiphyllums now!

by Terry Wilson

Epiphyllums, or cactus orchids, are blooming now! If you have multiple epis, now is the time to photograph them and mark the colors either with a plant tag or a permanent marker on one of the stems.

More importantly, now is the time to play the part of insect and help them to form fruits, from which you can harvest seeds after eating the delicate flesh. The smooth but sometimes spiny fruits are about the size of an egg and are just like a dragon fruit inside.

If you have a few different colored epiphyllums, it's fun to cross them. Get a paintbrush, cotton swab or other tool, even just your finger, and optionally a piece of paper to catch extra pollen. All the action will take place in the center of the flower, where the multiple stamens (male parts) and single pistil (female part) are. First brush your tool around the abundant anthers (at the end of the stamens) to gather the dusty pollen (let the extra pollen drop onto the piece of paper). Then tap the pollen onto the star-like stigma (at the end of the pistil) coming out of the center of the other plant's flower. It is a little sticky, to help hang onto the pollen.

Some epiphyllums are self-fertile, and others are self-sterile. This means that the first kind can pollinate itself, and the latter needs a different plant's flower to set fruit. With so many hybrids, it's impossible to know for sure, so when in doubt, use a neighboring flower. (The classic night-blooming cereus, epiphyllum oxypetalum, is self-sterile though.) If you only have one plant, try anyway to see if it is self-fertile.

If the flower falls off when it withers after a few days, then the pollination did not take. If it hangs on though, you should see a swelling where it is attached to the stem and soon a 1-2" fruit similar to other cacti fruit will appear and the withered flower will hang on. After some weeks it will darken to a red, pink or brown and feel a little soft like you'd expect a ripe fruit to feel. You can harvest it then, cut it in half, and scoop out the white or pink flesh. Some will barely taste like anything, and others will have a fragrant rosy or minty flavor. I find the stronger the color of the flower, the more flavor the fruit has. Because the small black seeds are mixed in with the flesh, you should scrape off as many seeds as you want before eating.

We'll revisit this topic when the fruits are ready to eat and harvest and seeds.

One more thing. Epiphyllums are jungle cacti, not desert cacti. Don't treat them harshly. Give them good, well draining soil and only partial sun or bright indirect sun. Let them dry out between waterings, but don't make them wait too long.



Donna Pachored designed and created this fantastic banner!



You still have a few days before the May 1st deadline!

CSSA Photo Contest

It is time to get out your cell phones, cameras or other photography devices.

The Cactus and Succulent Society of America (CSSA) is holding its first ever national photo contest.



All photos © Irwin Lightstone

To celebrate and contemplate the plants we love, the CSSA is holding a photo contest open to CSSA members and the minor children of CSSA members. For the theme of **“The Artistry of Cacti and Succulents,”** you are invited to enter up to three images.

There are two divisions; adult (16 years and older), and youth (younger than 16 years). Prizes will be awarded in each of the divisions.

- First Place: \$100.00 Gift Certificate from B&H Photo - Video, publication of the image in ‘To the Point’, and an 8 x 10 inch (approximate) print of the image.
- Second Place: \$25.00 credit toward purchase at the CSSA Seed Depot, publication of the image in ‘To the Point’, and an 8 x 10 inch (approximate) print of the image.
- Third Place: Publication of the image in ‘To the Point’, and an 8 x 10 inch (approximate) print of the image.
- Honorable Mention: Publication of the image in ‘To the Point’.

Deadline for entries is midnight PST, May 1, 2022. As there are no entry fees, you have nothing to lose! For more information about entry and the specific contest rules please visit the CSSA website home page.

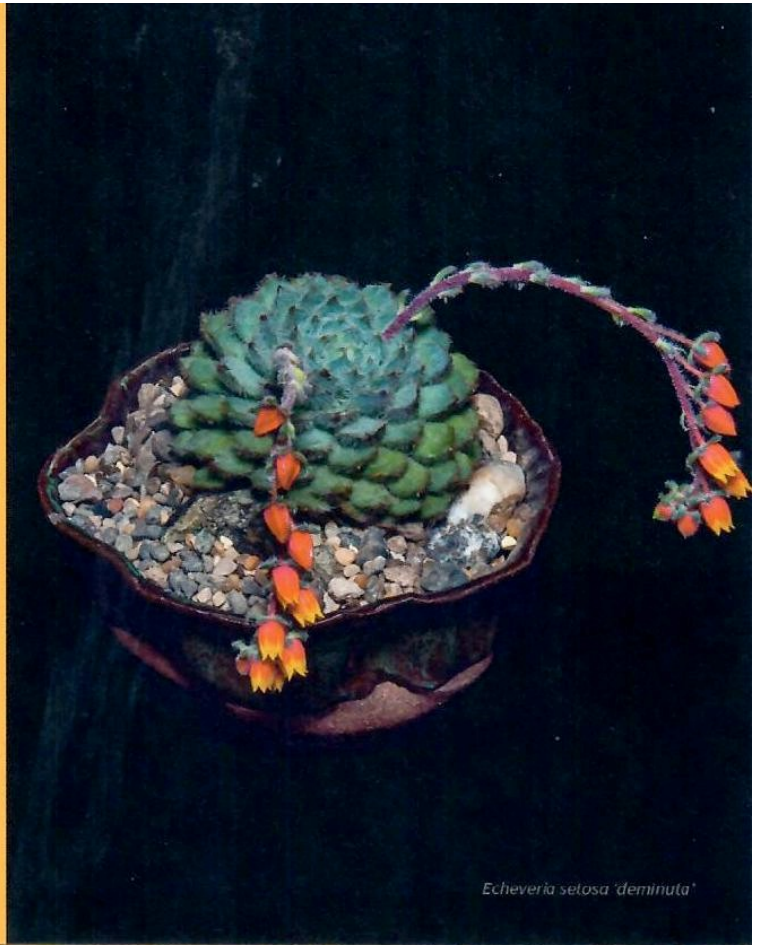
http://cactusandsucculentsociety.org/photo_contest.html

CENTRAL COAST CACTUS
& SUCCULENT SOCIETY

2022 SHOW & SALE

NEW LOCATION

MAY 28&29



Echeveria setosa 'deminuta'

14TH ANNUAL SHOW & SALE

**NEW
LOCATION**

Nipomo High School
525 N Thompson Ave

Saturday, May 28 — 10 am to 5 pm
Sunday, May 29 — 10 am to 4 pm

Free admission & parking on-site
Experts available for questions
Rare plants & handmade pottery sale
Cash/check/credit cards accepted

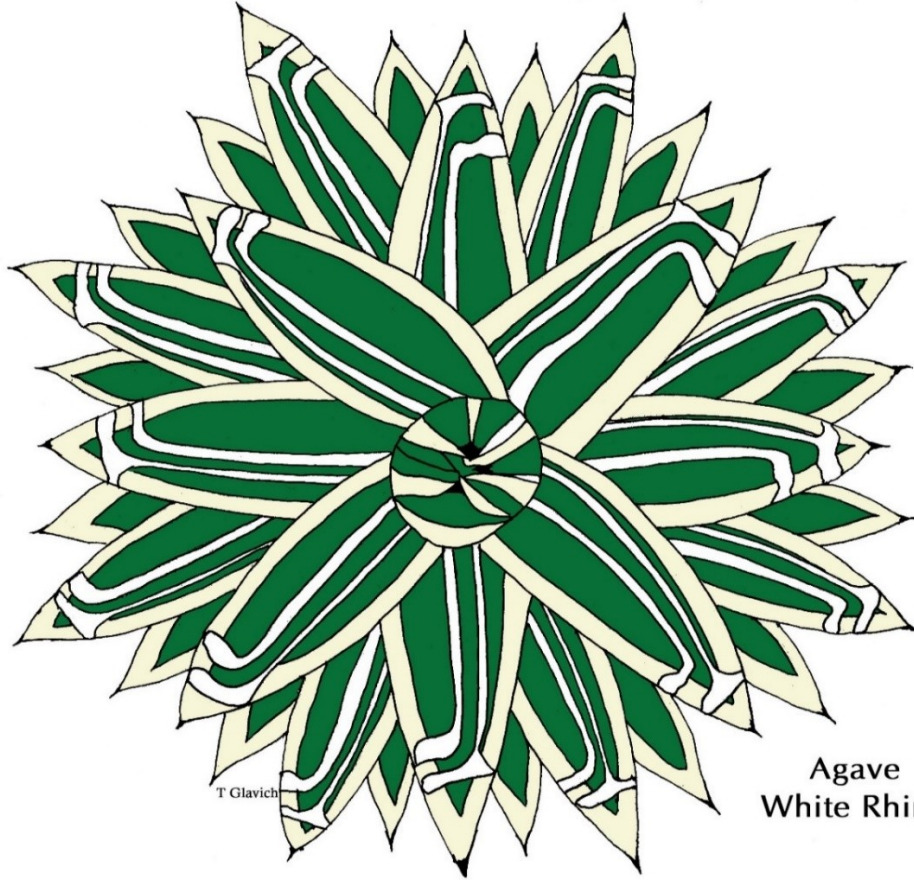
For more details visit:

www.CentralCoastCactus.org

 Central Coast Cactus
& Succulent Society

STATE AND LOCAL HEALTH GUIDELINES WILL BE OBSERVED OR EXCEEDED

Cactus and Succulent Society of America
55th Annual Cactus and Succulent
Show and Sale



T Glavich

Agave
White Rhino

July 1 - 3, 2022

The Huntington

Huntington Hours 10 AM to 5 PM
1151 OXFORD ROAD, SAN MARINO, CA
INFORMATION 626-405-3504

Open to the public with paid admission or Huntington membership
Advance online timed entry reservations are now required **ONLY** on weekends for
both visitors & Members. **NO WALK-INS**. Limited daily capacity.

Friday sale reservations strongly recommended.

Go to the huntington.org website for tickets

See www.cssashow.com for further details.

WELCOME BACK!
55th ANNUAL SHOW AND SALE
CACTUS AND SUCCULENT SOCIETY OF AMERICA
AT THE HUNTINGTON

- Dates** Friday, Saturday & Sunday, July 1-3, 2022
- Location:** The Huntington: 1151 Oxford Drive, San Marino, CA
The Botanical Center. Contact 626-405-3504
- Sale:** Friday, Saturday & Sunday 10:00am-5:00pm
- Show:** Saturday & Sunday 10:00am-5:00pm
- Show set-up:** Thurs. June 30, 9am-1pm
- Enter plants:** Thurs., June 30th 1pm-6pm & Friday, July 1, 8:00am-4:00pm. Judging starts at 5:00pm Friday
- Auction:** Saturday, July 2 at 7:00pm. Items need to be registered by 2PM
There will be a Silent Auction during dinner and a Live Auction (35 items max.) after dinner. Auctioneers will decide placement of items: 2 items per person/business marked as donation or split (70/30)
- Dinner:** Saturday, July 2, at 6:00pm, \$25 dinner. Menu: Dearmore BBQ with vegetarian options.
Reserve a spot by Phone: 213-305-1421 or email Bonnie at bikemura@hotmail.com. Reservations must be made by June 27th, 2022
Mail checks, made out to CSSA, to Bonnie Ikemura – 8400 Bleriot Ave. Los Angeles, CA, 90045;
- Tear down:** Sunday, July 3, 5:00pm

As of March 9, 2022, following the latest CDC recommendations, the HBG will no longer require masks indoors or outdoors at the HBG. For indoor events, attendees are encouraged to still wear a mask but it is now optional. The public will not be checked for vaccination status.

CSSA Club Affiliates need to pass this information on to their club members. Show Schedules & Indexes will be available online through your Club newsletter or website & www.cssashow.com. Entry tags will be available at many of the local clubs & at the show. I can mail entry tags upon request.

All Vendors, Volunteers or Show participants need to wear their club badges (if you have one) and a HBG wrist band each day they participate. These will be distributed by the Show Chair each day. Please go directly to the Botanical Center not thru the front entrance.

For those NOT participating, special passes for this event will no longer be distributed ahead of time. Information regarding comped entry for CSSA & CSS Club Members will be forthcoming in May or June. At this time, entry to the HBG is by advance online reservation on Weekends, no walk-ins & recommended for the Friday sale, even for HBG members. Stay tuned for updates!

There are opportunities to participate/volunteer in this year's show, in the showroom or sales areas, information table, holding area, welcome table at the HBG entry and for setup/teardown. All participants receive a show T-Shirt as a thank you. See you at the Show!

Barbara Hall
CSSA Annual Show Chair
Phone: 818-429-6914 (cell)
Email: Lbcjhall@aol.com

2022 Plant of the Month

	Cactus	Succulent
January	Columnar cacti	Succulent Bulbs
February	Ferocactus	Aloe
March	Parodia (Notocactus)	Gasteria
April	Gymnocalycium	Pachypodium
May	Echinopsis	Euphorbia from Madagascar
June	Crested/Monstrose	Crested/Monstrose
July	Echinocereus	Agave
August	Mammillaria	Adenium
September	Eriosyce	Cyphostemma & Cissus
October	Copiapoa	Stapeliads (including Ceropogia)
November	Opuntia & relatives	Conophytum & Lithops

Plant of the Month (POM) What is this all about?

Each meeting of the CCSS will feature a friendly plant show/competition (POM). The goal of the POM is two fold.

- Introduce the membership to the various cactus and succulent genera and to open up a discussion on the culture, care, and display of these plants.
- Encourage members to share their plants with membership.

POM Submissions:

- Members may submit up to 3 three plants in each of the two categories (Cactus and Succulents). Plants entered in the Intermediate and Advanced Divisions must have been owned and maintained by the member for a minimum of one year. Plants entered in the Novice category may be newly acquired plants.

POM Divisions:

- **Novice:** 0-25 Total points • **Intermediate:** 26-100 Total points • **Advanced:** >100 Total Points
- When a member has accumulated the total number points in their Division, they will be moved up to the next higher Division in the following calendar year.

POM Judging Criteria:

- Plants are evaluated according to the following criteria:
- Condition (health, form, damage). 50%
- Maturity and size. 25%
- Staging (Artistic composition - container, stonework, etc). 20%
- Nomenclature (proper plant identification). 5%
- Additional criteria may include rarity, difficulty in growing, and whether the plant is in flower.

POM Judging:

- 1st place - 6 points • 2nd place - 3 points • 3rd place - 2 points
- All other entries will be awarded 1 point. Entry slips will be collected by the POM Coordinator for tabulation, record keeping, and publication in the CCSS Newsletter.

We are encouraging all members to participate in the POM. This is your opportunity to show off your prized treasures or to possibly learn how to better care for your plants.

See you at the next meeting
CCSS Board

Cactus of the Month: *Echinopsis*

Most cacti have attractive flowers, but in general we grow them for the look of the plant itself. *Echinopsis* are an exception to this. It is a genus of nearly 200 species and hundreds more cultivars. Most plants are small to medium columnar cacti that are green and fairly nondescript, although some species can reach 15 feet or more in height. They are generally ignored when made available for sale if they aren't in flower. However, come bloom time they produce some of the most stunning flowers of any cacti. This is enhanced by the extensive breeding that has been done among this genus. Modern taxonomic research has found that several genera of cacti belong in *Echinopsis*, most notably *Lobivia* and *Trichocereus*.



Echinopsis backebergii



Echinopsis famatimensis

The standard *Echinopsis* flower is a few inches across and born on a long tube, giving it a trumpet like appearance. Many of the wild species have white flowers and bloom at night, but breeding has produced an array of colors that include red, yellow, orange, pink, and every color in between (as well as multicolor flowers). Some modern hybrids have been bred to produce flowers eight inches or more in diameter! An especially nice feature of these plants is they often produce flowers in large clusters which produce an amazing display.

Not all species and cultivars have plain plants. Plants like *Echinopsis* 'Fuzzy Navel' and 'Haku Jo' have attractive spines and tufts of white hair. This gives you a handsome looking plant even in times when it isn't flowering. The San Pedro Cactus, *E. panchoi*, is a great choice for a large columnar cactus for the landscape which requires little to no special care. This cactus is also famous as a source of mescaline, the same halogenic chemical found in Peyote (*Lophophora spp.*). While I don't advocate drug use, if people who used Peyote switched to San Pedro cactus it would be beneficial on an ecological level as San Pedro is fast growing and the same plant can be harvested over and over. By contrast, Peyote species are being decimated in the wild as they are a small, slow growing, endangered cactus that is completely destroyed when harvested.

The best way to buy a hybrid *Echinopsis* is of course to see it in bloom. That's not always possible, but most of the nicest hybrids are named. So do some research online and write down the name of the types you like then take the time to check tags at a cactus sale. Alternatively, look for sellers who provide pictures at their sales table. Plants are easy to grow and most can live happily in a pot or in your landscape with standard cactus care.



Echinopsis 'Fuzzy Navel'

**-Kyle Williams
Photo Credits: Kyle Williams**

Euphorbia from Madagascar



Euphorbia francoisii

Euphorbias are among the most successful plant genera, covering an amazing geographical and environmental range. Containing over 2000 species, it is one of the five largest genera of plants in the world (some rank it as the second largest behind *Astragalus*, a legume). While we know them as succulents, *Euphorbia* includes tiny herbs, leafy shrubs, and even giant rainforest trees. In horticulture, they span the range from English Garden plants to trees, stem succulents, geophytic miniatures, to medusoid globulars to caudiciforms.

Our focus this time are on the *Euphorbia* species native to Madagascar. While no single characteristic distinguishes the plants from that island, I've come to notice that in cultivation there are a disproportionate number of leafy stem or caudex forming species as compared to those from the African continent. This includes the very popular *E. milii*, as well as species such as *E. decaryi*, *E. neohumbertii*, *E. millotii*, *E. francoisii*, and *E. waringiae*. Of course there are wonderful leafless species as well, such as *E. platyclada* and *E. kamponii*.

Many *Euphorbias* from Madagascar are very easy to grow, with the swollen roots and stems making them very tolerant of under watering. However, many leafy species, especially those with thinner leaves such as *E. pachypodioides* and *E. milii* appreciate regular watering in the growing season. Care must be given in watering, keeping them warm and wet while growing, and cooler and dry when dormant. *Euphorbias* from Madagascar are more tropical than species from South Africa (the vast majority of *Euphorbia* in cultivation are from those two countries) and therefore less tolerant of cold conditions. They are particularly prone to rot if left cold and damp while dormant. Protection in a greenhouse, or a bright windowsill in the middle of the winter will greatly increase the survival rate, but most species will get by outdoors in our region if kept dry during this time.



Euphorbia pachypodioides



Euphorbia kamponii

Most *Euphorbias* are easy to propagate. The green stems can be removed, left to dry for at least week or even a bit more, and then replanted. The newly planted stems take a few weeks to establish, and then start growing. In caudiciform species some cuttings will not form caudexes unless double cut. Once growth is strong, the top of the green shoot needs to be cut off again to force the plant to start a caudex. Some species form a perfectly symmetrical caudex when grown from seed, but form distorted (but often more interesting) caudexes when grown from cuttings.

In collections or when entered into shows, caudiciform species have the caudex often raised above the soil line to expose the intricate and exotic root system that are typically submerged in habitat. Stem succulent species won't form thickened roots and should therefore be grown at the normal soil level.

Kyle Williams
Photo Credits: Kyle Williams

PLANT OF THE MONTH (POM) WINNERS
April, 2022

Cactus - Gymnocalycium

Novice:

1st	<i>Gymnocalycium bruchii.</i>	Divina Grover
2nd	<i>Gymnocalycium baldianum</i>	Erin Fischer
3rd	<i>Gymnocalycium ragonesei</i>	Ann Powers

Intermediate:

1st	<i>Gymnocalycium triacanthum</i> Crest	Glen & Pam Smith
2nd	<i>Gymnocalycium mihanovichii</i> ssp. <i>friedrichii</i>	Ann Hopkinson
3rd	<i>Gymnocalycium</i> <i>mesopotamicum</i>	Glen & Pam Smith

Advanced:

1st	<i>Gymnocalycium</i> sp.	Linda Holub
2nd	<i>Gymnocalycium</i> sp.	Linda Holub
3rd	<i>Gymnocalycium</i> sp.	Linda Holub

Pachypodium

Novice:

1st	<i>Pachypodium</i> sp.	Ryan Riply
2nd	<i>Pachypodium brevicaule</i>	Ryan Riply

Intermediate:

1st	<i>Pachypodium rosulatum</i> var. <i>gracilis</i>	Ann Hopkinson
2nd	<i>Pachypodium brevicaule</i> x <i>densiflorum</i>	Ann Hopkinson
3rd	<i>Pachypodium succulentum</i> var. <i>griguense</i>	Ann Hopkinson

Advanced:

1st	<i>Pachypodium geayi</i>	Linda Holub
2nd	<i>Pachypodium</i> sp.	Linda Holub

The April.POM table was a little lite. POM is one of the educational segments of our meetings. By entering plants into the monthly POM it allows the membership to become better acquainted with the different succulent plant genera and how to effectively stage them. So let's keep those entries coming.

There were 21 entries in all, 7 Novice, 9 Intermediate, and 5 Advanced. Congratulations to the winners and thank you to all that participated.

Winners - April Cactus of the Month - *Gymnocalycium*

BEGINNER



1st Place
Gymnocalycium bruchii
Divina Grover



2nd Place
Gymnocalycium
Erin Fischer

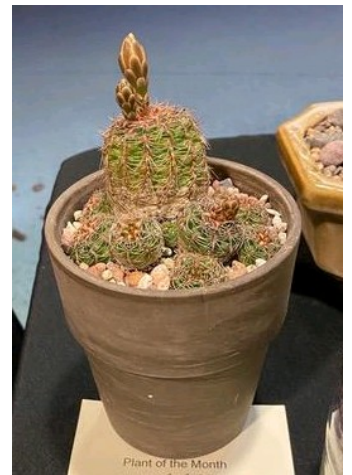
INTERMEDIATE



1st Place
Gymnocalycium triacanthum
Glen & Pam Smith



2nd Place
Gymnocalycium mihanovichii
ssp. *friedrichii*
Ann Hopkinson



3rd Place
Gymnocalycium mesopotamicum
Glen & Pam Smith

ADVANCED

1st Place
Gymnocalycium sp.
Linda Holub



2nd Place
Gymnocalycium sp.
Linda Holub



3rd Place
Gymnocalycium sp.
Linda Holub

Winners - April Succulent of the Month - Pachypodium

BEGINNER



1st Place
Pachypodium sp.
Ryan Ripley



2nd Place
Pachypodium brevicaule
Ryan Ripley

INTERMEDIATE



1st Place
Pachypodium rosulatum
var. *gracilis*
Ann Hopkinson



2nd Place
Pachypodium brevicaule
x *densiflorum*
Ann Hopkinson



3rd Place
Pachypodium succulentum
var. *Griguense*
Ann Hopkinson

ADVANCED



1st Place
Pachypodium gaeyi
Linda Holub



2nd Place
Pachypodium sp.
Linda Holub

Divina Grover

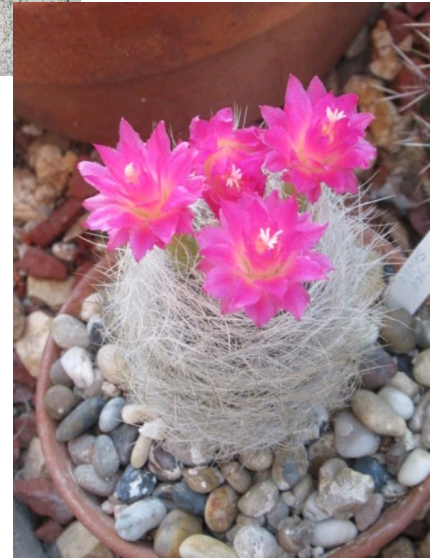


Rebutia narvaecensis



Echinocereus pentalophus

Glen & Pam
Smith



Eriogyne senilis

Ann Hopkinson



Lobivia famatimensis



Ferocactus glaucescens

Melinda Hines



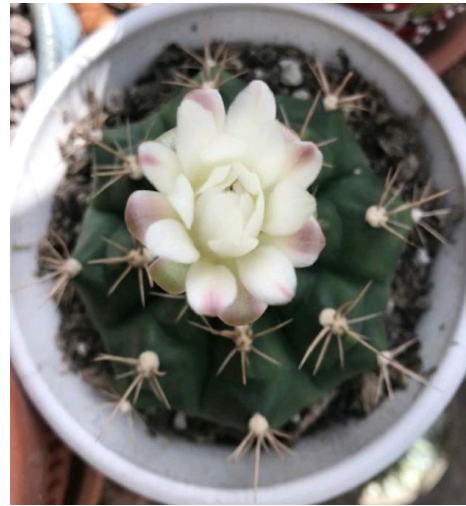
April blooms on the sixth floor terrace window shelf in Madrid, Spain where Melinda's son, Andrew, grows his little collection.



Melinda's April blooms



Echinopsis 'Flowering torch'



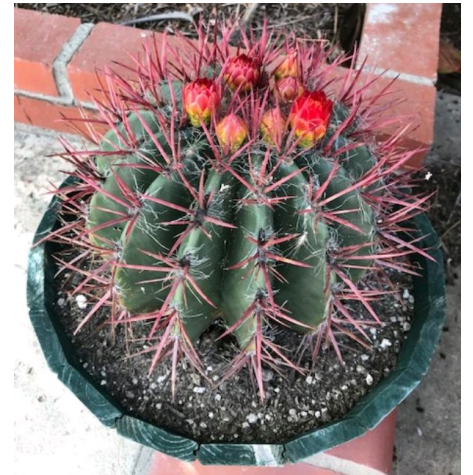
Gymnocalycium sp.



Golden torch



Pilosocereus azulensis



Ferocactus latispinus



Hesperaloe